

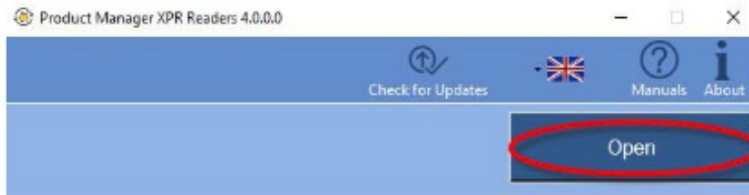
# Configuring XPRO and XSmart Reader to read encrypted Mifare Desfire and Mifare Classic card using Product Manager XPR Readers

## APPLICATION NOTE

**A007** This application note explain how to configure Configuring XPRO and XSmart Reader to read encrypted Mifare Desfire and Mifare Classic card using Product Manager XPR Readers.

### Configuring Xpro and XSmart reader to read Custom Encrypted Mifare Desfire cards using Product Manager XPR Readers

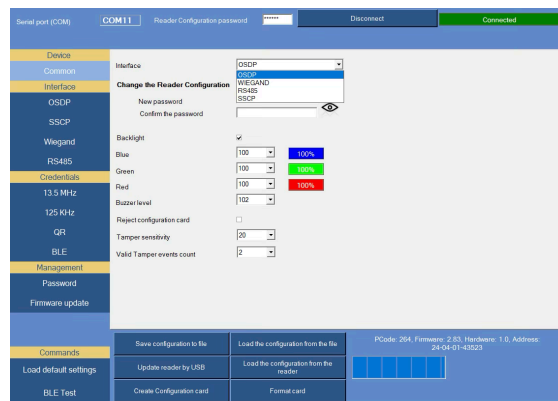
1. Open Product Manager XPR Readers and click at "Open" tab.



### 2. Important !

Please upgrade the device firmware first to the latest version before you have started configuring the reader and all the parameters are set for configuring the reader and you want to configure the reader via the "Update Reader via USB" tab.

3. At section "Common" select your interface (OSDP,WIEGAND,RS485,SSCP) and make the correct settings.

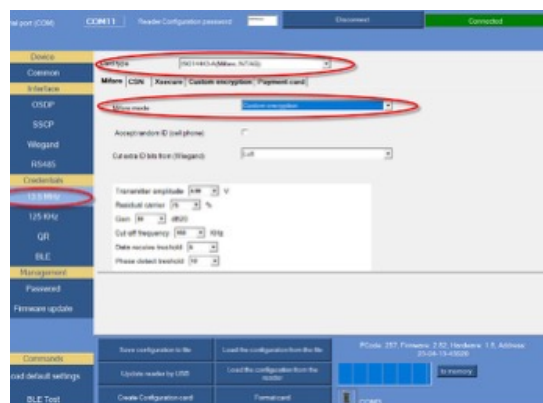


4. Then you can use "Update reader by USB" tab if reader is connected at USB or you can create Configuration card and use for reader configuration.

5. Select section "13,5Mhz" and at section "Card type" select "ISO 14443A (Mifare,NTAG)".

6. At section "Mifare Mode" select "Custom Encryption".

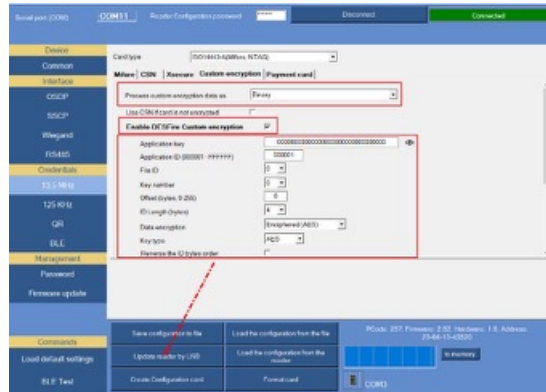
7. Then you can use "Update reader by USB" tab if reader is connected at USB or you can create configuration card and use for reader configuration.



8. Go at section “Custom encryption” and insert all value as per picture.

## Note

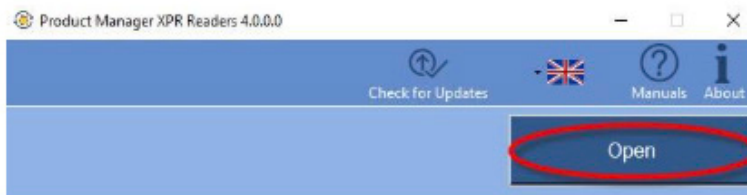
**Value showing at picture are only for explanation purpose and they are not for valid use. Advice your client to make his own value for Custom encryption.**



9. After all value are already entered, then you can use “Update reader by USB” tab if reader is connected at USB or you can create Configuration card and use for reader configuration.

## Configuring Xpro and Xsmart reader to read Custom Encrypted Mifare Classic cards using Product Manager XPR Readers

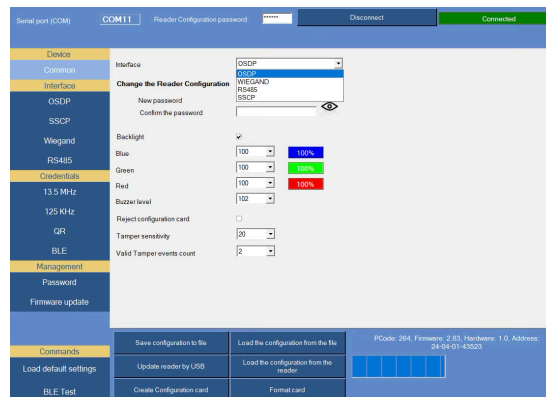
1. Open Product Manager XPR Readers and click at “Open” tab.



## 2. Important

Please upgrade the device firmware first to the latest version before you have started configuring the reader and all the parameters are set for configuring the reader and you want to configure the reader via the “Update Reader via USB” tab.

3. At section “Common” select your interface (OSDP,WIEGAND,RS485,SSCP) and make the correct settings.

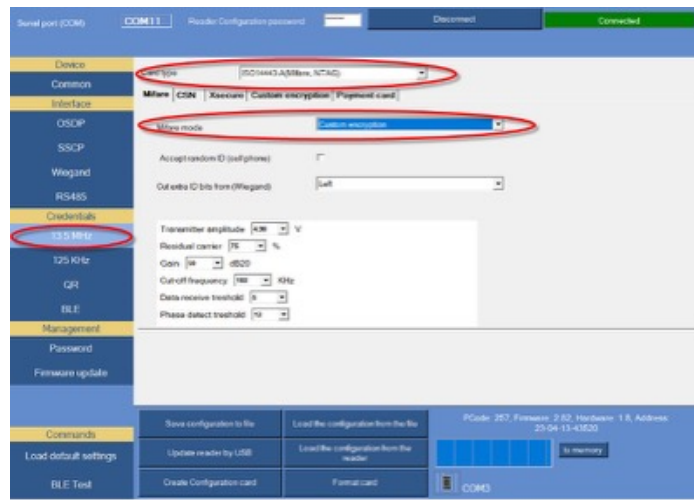


4. Then you can use “Update reader by USB” tab if reader is connected at USB or you can create Configuration card and use for reader configuration.

5. Select section “13,5Mhz” and at section “Card type” select “ISO 14443A (Mifare,NTAG)”.

6. At section “Mifare Mode” select “Custom Encryption”.

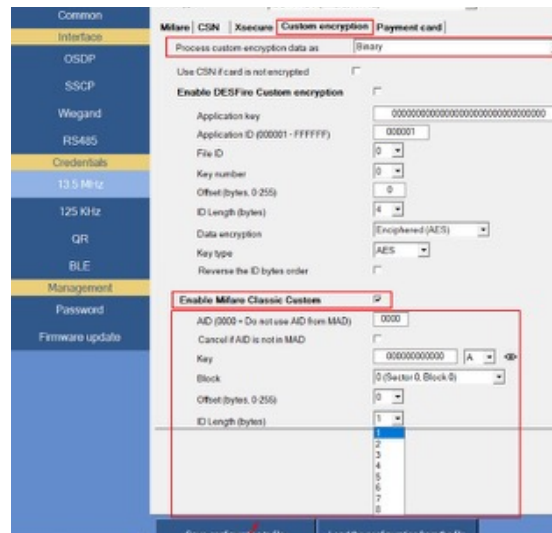
7. Then you can use “Update reader by USB” tab if reader is connected at USB or you can create Configuration card and use for reader configuration.



8. Go at section “Custom encryption” and insert all value as per picture.

**Note** i

**Value showing at picture are only for explanation purpose and they are not for valid use. Advice your client to make his own value for Custom encryption.**



9. After all value are already entered, then you can use “Update reader by USB” tab if reader is connected at USB or you can create Configuration card and use for reader configuration.