

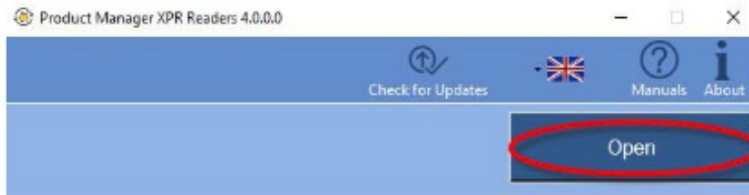
# Configuring XPRO and XSmart Reader in OSDP Mode using Product Manager XPR Readers

## APPLICATION NOTE

A006 This application note explain how to configure Configuring XPRO and XSmart Reader in OSDP Mode using Product Manager XPR Readers.

### Configuring XPRO and XSMART reader in OSDP Mode using Product Manager XPR Readers

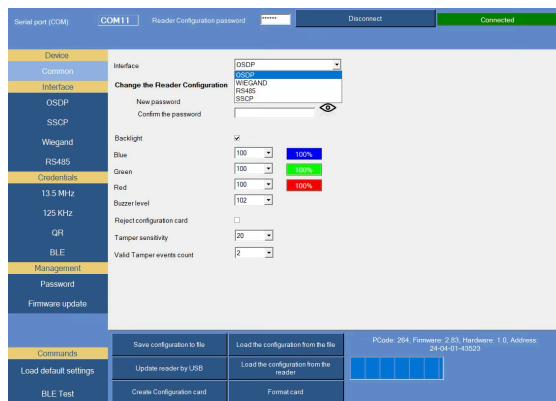
1. Open Product Manager and click at "Open" tab.



### 2. Important !

If you have started configuring the reader and all the parameters are set for configuring the reader and you want to configure the reader via the "Update Reader via USB" tab, when you click on the "Update Reader via USB" tab, if the current firmware version of the reader is older than the latest firmware version available for this reader model, a pop-up window will appear with the message "Please upgrade the device firmware to the latest version".

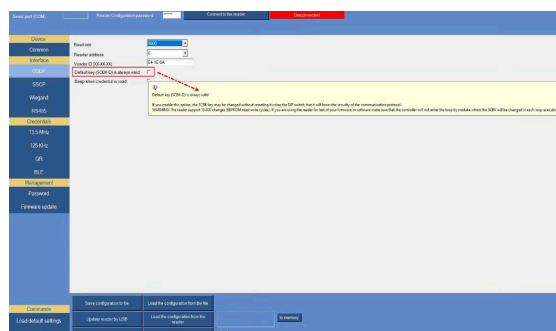
3. At section "Common" select your interface (OSDP) and make the correct settings.



4. At section "OSDP" select "Baud rate" and at section "Reader address" select which reader address will belong to the reader.

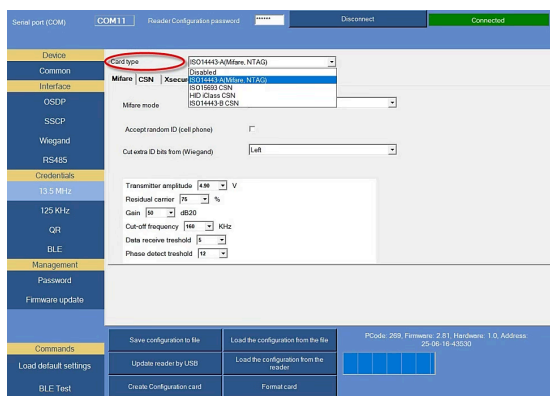
5. Default key (SCBK-D) is always valid section. If you enable this option, the SCBK key may be changed without resetting it using the DIP switch, but will lower the security of the communication protocol.

6. "Beep when credentials are read" is section when card is swipe at front of the reader, reader will emit a beep.

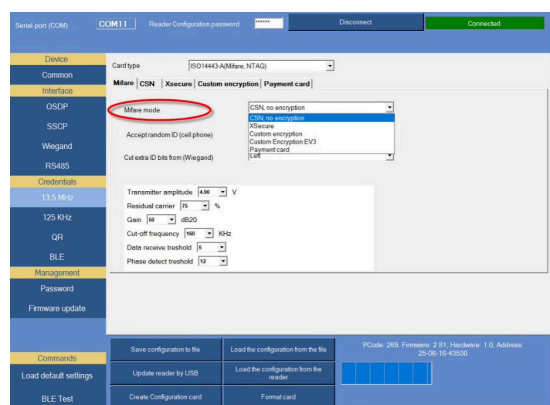


7. Then you can use "Update reader by USB" tab if reader is connected at USB or you can create Configuration card and use for reader configuration.

8. Select section "13,5Mhz" and at section "Card type" select which type of card going to be used at the reader.



9. At section "Mifare Mode" select which mode going to be used.



10. Then you can use "Update reader by USB" tab if reader is connected at USB or you can create Configuration card and use for reader configuration.

