

Xpro and Xsmart reader configuration for Xsecure and Payment card using Product Manager XPR Readers

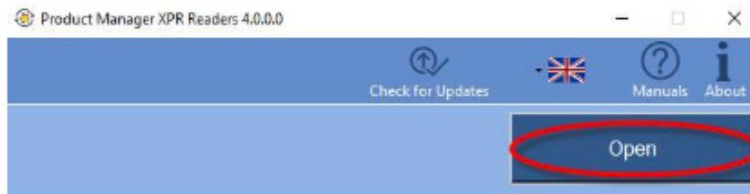
APPLICATION NOTE

A004

This application note explain how to configure and Xsmart reader to read Xsecure and PAN cards using Product Manager XPR Readers.

Configuring Xpro and Xsmart reader Reader to read Xsecure cards using Product Manager XPR Readers

1. Open Product Manager and click at "Open" tab.

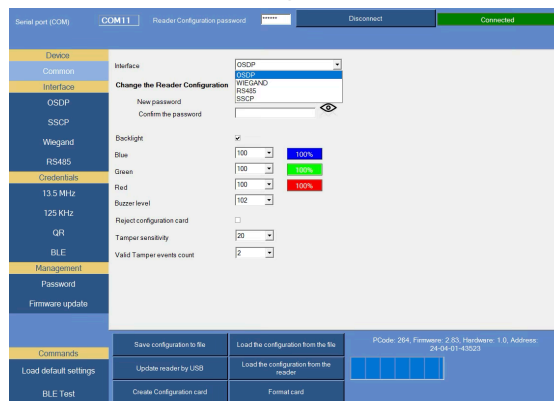


2. Important !

If you have started configuring the reader and all the parameters are set for configuring the reader and you want to configure the reader via the "Update Reader via USB" tab, when you click on the "Update Reader via USB" tab, if the current firmware version of the reader is older than the latest firmware version available for this reader model, a pop-up window will appear with the message "Please upgrade the device firmware to the latest version".

3. At section "Common" select your interface (OSDP,WIEGAND,RS485,SSCP) and make the correct settings.

4. Then you can use "Update reader by USB" tab if reader is connected at USB or you can create Configuration card and use for reader configuration.

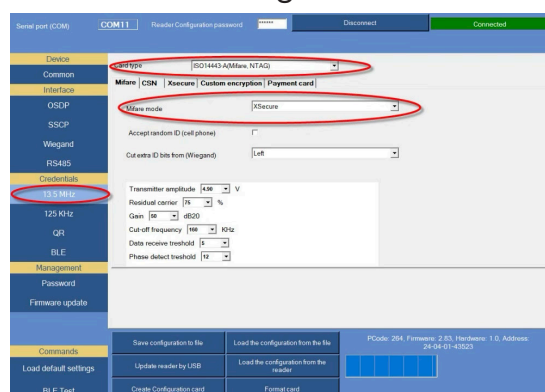


5. Select section "13,5Mhz and at section "Card type" select ISO 14443A (Mifare,NTAG).

6. At section "Mifare Mode" select "Xsecure".

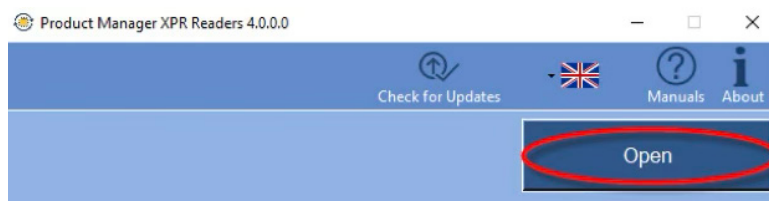
7. Option "Cut extra ID bits from (Wiegand) is to cut from left or right from number.

8. Then you can use "Update reader by USB" tab if reader is connected at USB or you can create Configuration card and use for reader configuration.



Configuring Xpro and Xsmart reader to read PAN cards using Product Manager XPR Readers

1. Open Product Manager XPR Readers and click on “Open” tab.

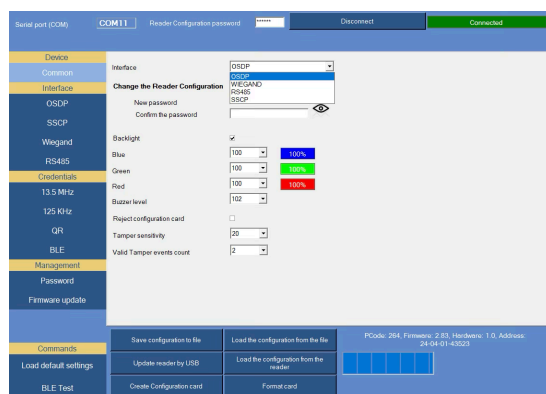


2. Important !

If you have started configuring the reader and all the parameters are set for configuring the reader and you want to configure the reader via the “Update Reader via USB” tab, when you click on the “Update Reader via USB” tab, if the current firmware version of the reader is older than the latest firmware version available for this reader model, a pop-up window will appear with the message “Please upgrade the device firmware to the latest version”.

3. At section “Common” select your interface (OSDP,WIEGAND,RS485,SSCP) and make the correct settings.

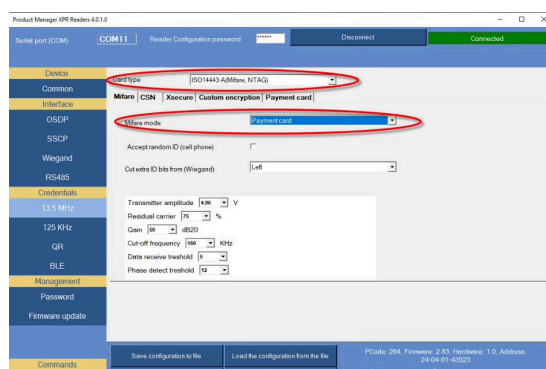
4. Then you can use “Update reader by USB” tab if reader is connected at USB or you can create Configuration card and use for reader configuration.vv



5. Select section “13,5Mhz and at section “Card type” select ISO 14443A (Mifare,NTAG).

6. At section “Mifare Mode” select “Payment card”.

7. Then you can use “Update reader by USB” tab if reader is connected at USB or you can create Configuration card and use for reader configuration.



8. Go at section “Payment card”.

9. At section “PAN Output format” you can select “PAN” and PAN with Expired Date or Expired Date with PAN (only for OSDP Mode).

10. At section “Remove digit from PAN” you can select how many digits to be removed from PAN number.

11. At section "Remove from" you can choice how many digits from PAN to be removed from right or left.
12. If you select section "Send CSN if PAN is not found" card will send only CSN.
13. If you select option "Reverse PAN output", PAN number will be displayed in reverse.

